

Figure 1: 2017 Grab Sample Locations (green triangles) and geological observations (maroon circles) at the Martin Group. 442 geological observations, 166 of which included rock grabs.

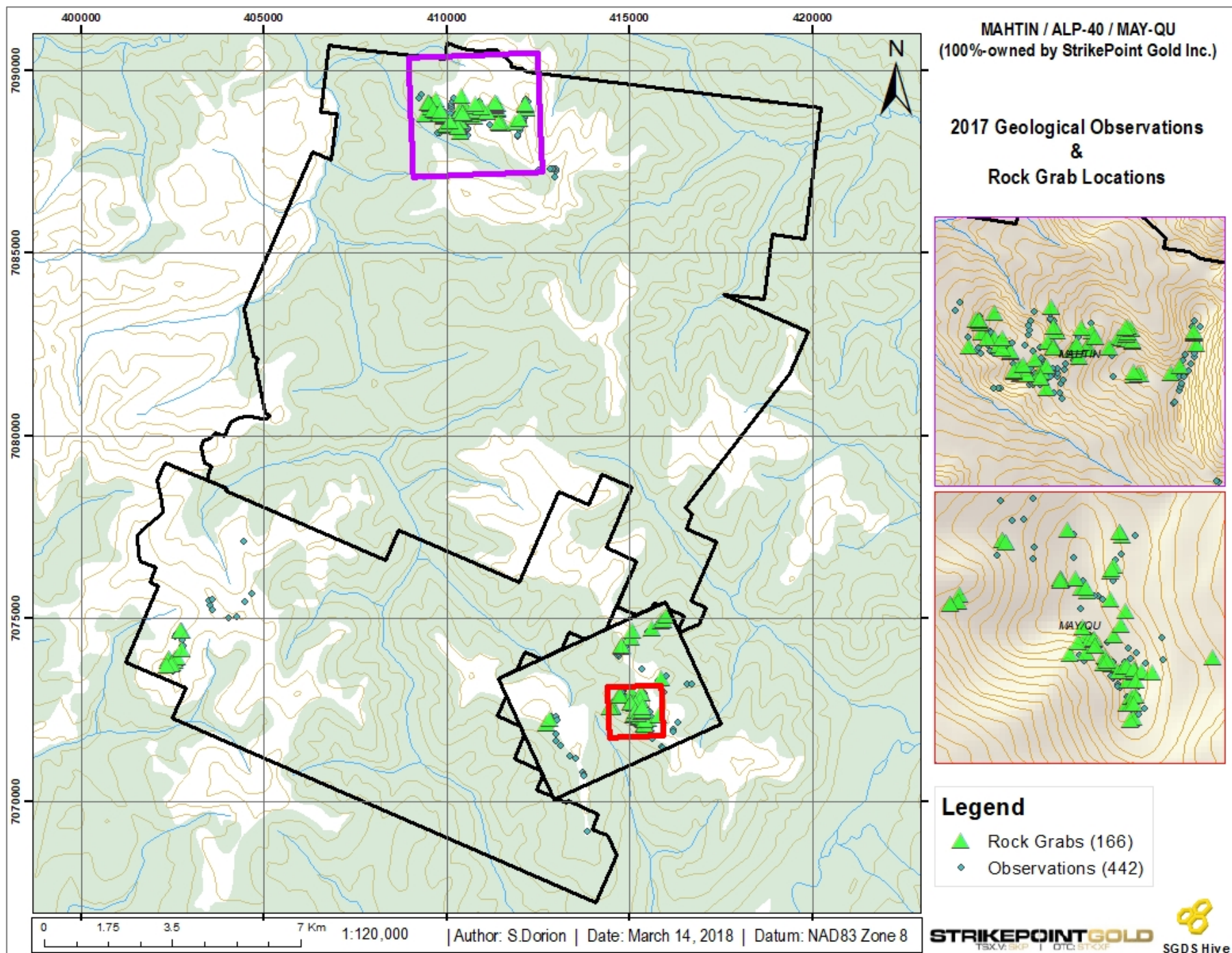


Figure 2: Outcrop-only observations from 2017 geological reconnaissance at the MahTin Group.

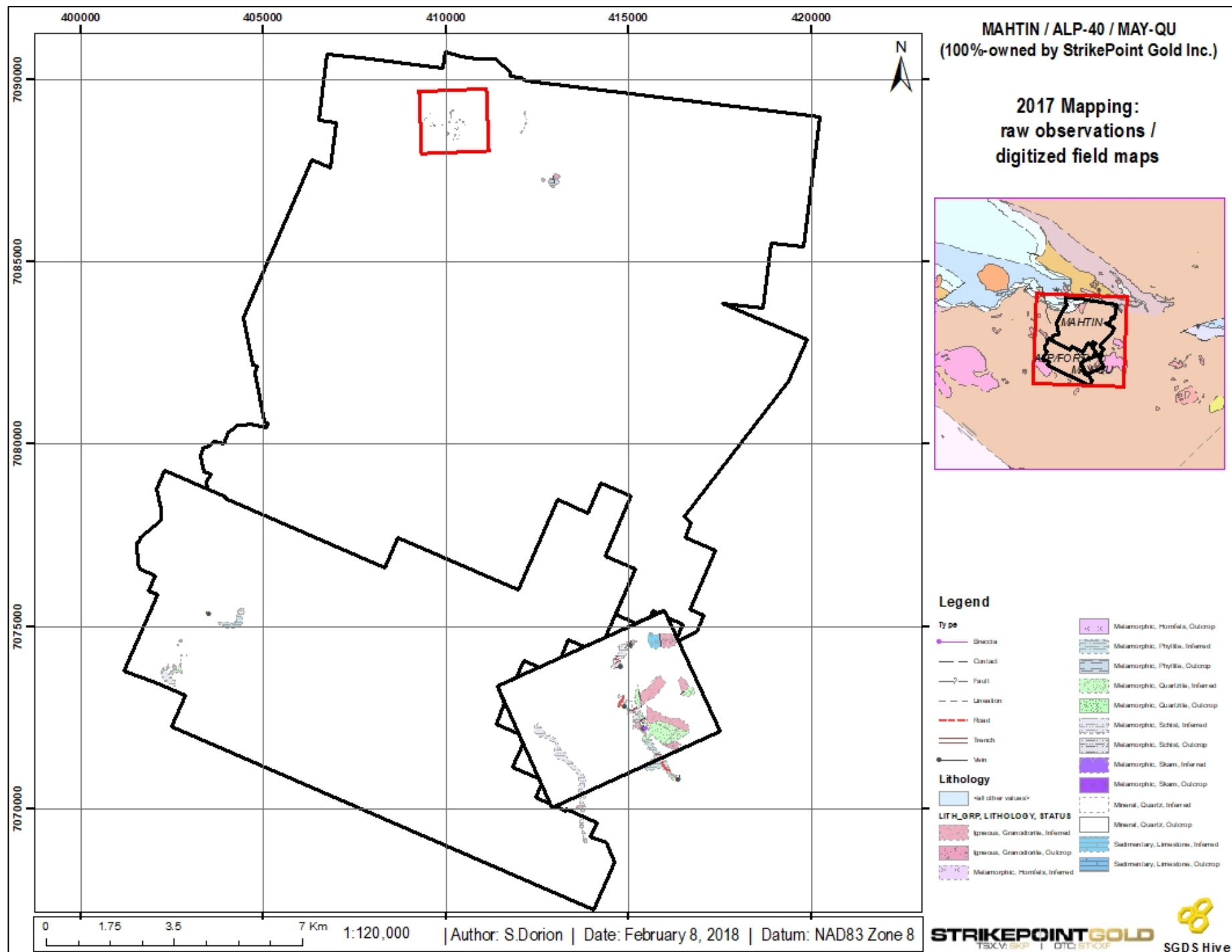




Figure 3: Collar locations for the 2017 RAB drill program at the Mahtin Group's Mahtin North and May-Qu prospects.

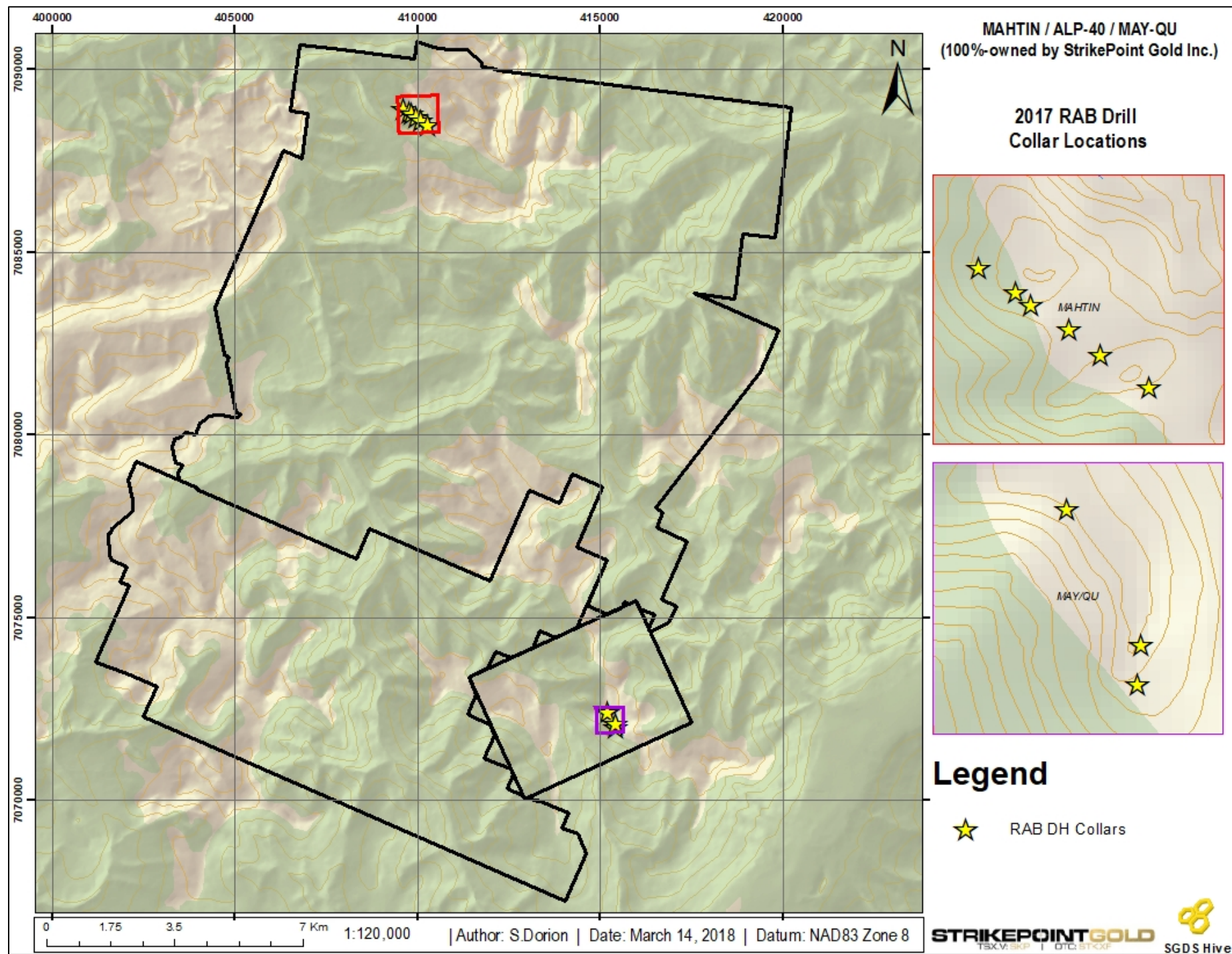


Figure 4: 1:1,000 mapping of the May-Qu prospect. Quartzite / intensely silicified biotite-quartz schist in the historic trenching area (northern section of the map) revealed direct correlation with gossan outcrops; synonymous with historic Ag-mineralization anomalies. Map only displays observed outcrops; no inferred assumptions between traversed sections displayed. 2017 RAB collars displayed as stars.

